

ULTRA-PREMIUM INTERIOR PAINTS

EVEREST®

Performance, Style and Beauty
in a Self-Priming, Zero VOC Paint







EVEREST

EVEREST paints are a complete line of ultra-premium, zero VOC*, low odor, self-priming 100% acrylic coatings ideal for use on high-end residential and commercial projects. They apply easily and feature exceptional hide, superior stain resistance, washability and adhesion.

Why EVEREST paints outperform the competition

- :: Formulated using ultra-premium resins and pigments that provide exceptional performance, including adhesion, burnish resistance, and sheen uniformity
- :: Virtually no odor during or after application, perfect for painting occupied spaces
- :: Great flow and leveling for an even, uniform finish

For use on these substrates

	Drywall	Wood	Metal	Masonry		
						
			Flat	Velvet	Eggshell	Semi-Gloss
Family & Living Rooms			•	•	•	
Dining Rooms			•	•	•	
Bedrooms			•	•	•	
Ceilings			•	•	•	
Hallways			•	•	•	
Classrooms			•	•	•	
Offices			•	•	•	
Kids' Rooms				•	•	
Kitchens & Baths					•	•
Cabinets, Doors, Windows & Shutters						•
Molding & Trim						•

These are commonly used gloss levels for surfaces listed above. Gloss may be affected by texture, porosity of the surface and atmospheric conditions. Please contact a Dunn-Edwards representative or your local store for specific product availability.

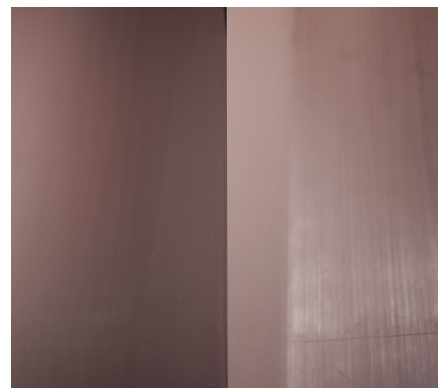
Zero VOC means 'no organic solvents added.' (Trace amounts of VOC may be present as residual components of other ingredients. Dunn-Edwards uses zero VOC colorants; other additives may increase VOC emissions.)





Unbeatable burnish resistance

Burnishing can quickly degrade a painted surface, leaving behind an unsightly polished look. The advanced formula of EVEREST paints provides superior resistance to withstand the effects of consistent abrasion and contact.



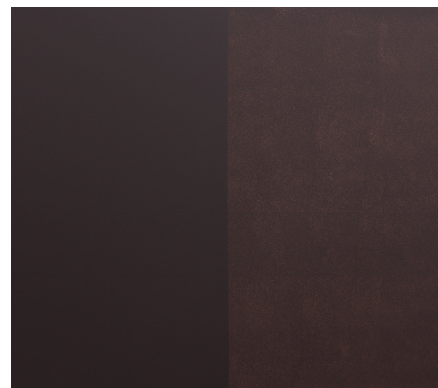
EVEREST

National Brand

Burnish resistance is a paint's ability to resist becoming shiny or polished over time due to repeated abrasion or friction on the surface.

Impressive applied hide

EVEREST paints deliver truly exceptional hiding power, resulting in fewer coats needed per project, saving time and labor.



EVEREST

National Brand

Applied hide is the ability of paint to conceal or obscure the surface over which it is applied.

Project types

High-end
residential



Single family



Premier
commercial



Education



Healthcare



Offices

All test examples are high resolution photographs of the actual test results. The tests were conducted by Dunn-Edwards Laboratories and can be viewed at the corporate office by appointment.

PROTECT WHAT MATTERS

The success of your projects depends on the performance and durability of the products you use. Safeguard your work with coatings engineered to last. You'll be doing your part to protect the planet, too. Made in the world's first and only LEED® Gold-certified paint manufacturing facility, Dunn-Edwards products meet or exceed most environmental standards.



'LEED' and related logo is a trademark owned by the U.S. Green Building Council and is used with permission.



Products bearing this logo are EG-FREE™ and TAC/HAP-FREE. Ethylene glycol (EG), a solvent often used in water-based paints, is listed as a Toxic Air Contaminant (TAC) and Hazardous Air Pollutant (HAP). In 1983, Dunn-Edwards was the first in the industry to voluntarily replace EG with propylene glycol, a nontoxic alternative "generally regarded as safe" by the FDA. Also, every Dunn-Edwards product with the EG-FREE logo is formulated without any other TAC or HAP.



A GREEN LEGACY, A GREENER FUTURE.

Dunn-Edwards has a green legacy that makes us proud and inspires us to do more. We are firmly dedicated to the principle of eco-efficiency, which we define as the ability to satisfy human needs in ways that minimize adverse impacts on energy and material resources, environmental quality, and human health and safety.

HEALTH & SAFETY when using water-based paints:

CAUTION! INHALATION OF SPRAY MIST OR SANDING DUST MAY BE HARMFUL. Use only with adequate ventilation. Avoid breathing vapors, spray mist and sanding dust. Wear a NIOSH-approved N100 filter mask (particulate type) when spraying or sanding. Avoid contact with skin and eyes. Do not ingest. Close container after use.

FIRST AID: If swallowed, immediately give 1 or 2 glasses of water to drink—for emergency information, call 1-800-222-1222. If having difficulty breathing, move to fresh air. For eye contact, immediately flush with water for 15 minutes. For skin contact, wash thoroughly with soap and water.

KEEP OUT OF REACH OF CHILDREN.

For more information, see the appropriate Product Data Sheet(s) and Safety Data Sheet(s) available at dunnedwards.com

CAUTION! Scraping or sanding surfaces of older buildings (especially pre-1978) may release dust containing lead or asbestos. EXPOSURE TO LEAD OR ASBESTOS CAN BE VERY HAZARDOUS TO YOUR HEALTH. Wear a NIOSH-approved N100 particulate filter mask to avoid breathing dust. Use a HEPA vacuum for cleanup, and finish by water-washing all surfaces. For more information, see Dunn-Edwards 'Surface Preparation Safety' guide or call U.S. EPA's lead hotline at 1-800-424-LEAD, or visit epa.gov/lead or epa.gov/asbestos—or contact your state or local Health Agency.

PHOTOGRAPHS: Paint colors depicted in the photographs in this brochure appear differently than on actual surfaces. Photographic processes and lighting will alter appearance. BACK COVER PHOTO: Walls: Milk Glass (DEW358) FRONT COVER PHOTO: Trim: Milk Glass (DEW358) • Wall: Teddy Bear (DE6131)



(888) DE PAINT (337-2468) | dunnedwards.com

©2024 Dunn-Edwards Corporation. All rights reserved. ESL0062 - 6M 08/24



LEARN MORE