



IMAGES COURTESY OF SCHMIDT HAMMER LASSEN

2015 DESIGNTRENDS

COMMERCIAL ARCHITECTURE

GRACE LENNON ASSOCIATE AIA LEED AP BD&C



REFLECTIVE

PG 3

CANTILEVER

PG 12

TRANSPARENCY

PG 6

REPETITION

PG 9

REFLECTIVE

INSPIRATION

PROVIDE AESTHETICALLY PLEASING, AND
SITE-INTEGRATED DESIGN.

IDEA OF **EVOLVING** ARCHITECTURE.

BLUR THE **PERCEPTUAL BOUNDARY**
BETWEEN OBJECT AND SETTING.

PROMOTE A **INTERACTIVE** AND MORE
CREATIVE APPROACH TO DESIGN.

APPLICATION

INCORPORATE MIRRORS INTO DESIGN TO REFLECT
SURROUNDING ENVIRONMENT.

USE REFLECTIVE GLASS FACADE MATERIALS.

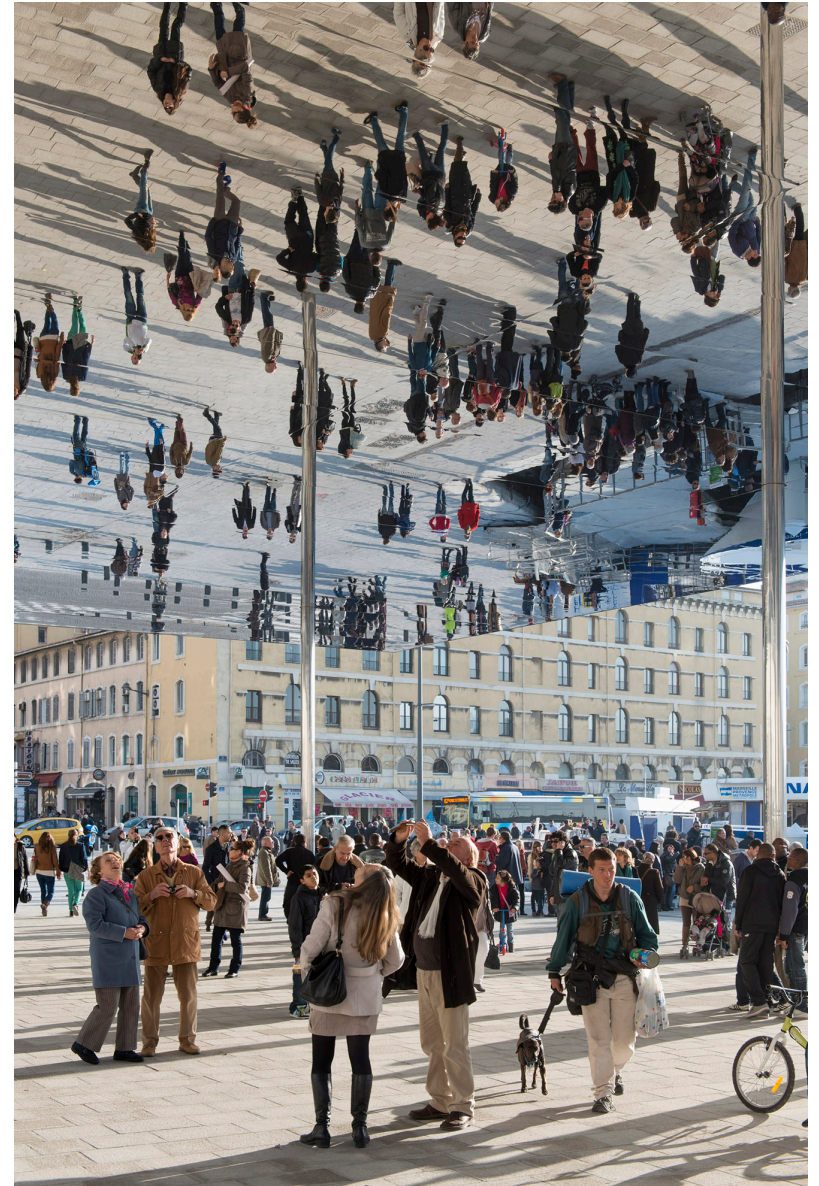


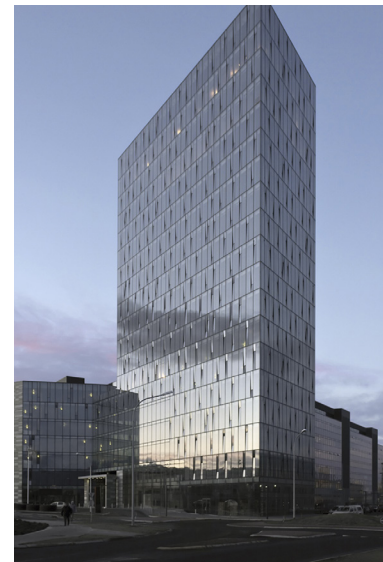
IMAGE COURTESY NIGEL YOUNG_FOSTER + PARTNERS

REFLECTIVE

GLASS

ANY ADDITION TO THE SKYLINE MUST TAKE ITS GEOGRAPHICAL AND TOPOGRAPHICAL CONTEXT INTO CONSIDERATION. THEREFORE ARCHITECTS ARE BEGINNING TO UTILIZE MIRROR-LIKE FACADE MATERIALS TO REFLECT THE SURROUNDING ENVIRONMENT.

TURNINN, A COMMERCIAL TOWER DESIGNED BY PK ARKITEKTAR, FACES THE BAY OF REYKJAVÍK AND THE MOUNTAIN ESJA ACROSS. THE BUILDING IS WRAPPED IN A UNIQUE SKIN OF SOLID GLASS AND OPERABLE-SLOT GLAZED PANELS, WHICH ALLOWS THE BUILDING TO APPEAR INVISIBLE. THE BUILDING REFLECTS THE CLOUDS AND WATER, CAMOUFLAGING IT AGAINST THE MOUNTAINS IN THE DISTANCE, THEREFORE ASSISTING IN REDUCING THE BUILDINGS OVERALL SCALE. THESE UNIQUE OPEN-ABLE-SLOT PANELS HELP TO ANIMATE WHAT WOULD OTHERWISE BE FLAT IMPOSING FAÇADES, AS WELL AS TAKING ADVANTAGE OF PASSIVE VENTILATION.



IMAGES COURTESY OF PK ARKITEKTAR

MIRROR

BY UTILIZING MIRRORS AND REFLECTIONS, ARCHITECTS CAN DESIGN STRUCTURES THAT EVOLVE WITH SEASONAL AND DAILY RHYTHMS, INTEGRATING WITH THE SITE WHILE KEEPING CONTEMPORARY CHARACTER.

A POLISHED STEEL CANOPY REFLECTS VISITORS WALKING UNDERNEATH AT THIS **EVENTS PAVILION** IN MARSEILLE'S HARBOR BY UK FIRM FOSTER + PARTNERS. SUPPORTED BY EIGHT SLENDER COLUMNS, THE STAINLESS-STEEL STRUCTURE STRETCHES OVER THE PAVING TO CREATE A SHELTERED EVENTS SPACE IN THE CITY'S OLD PORT. ITS POLISHED, MIRRORED SURFACE REFLECTS THE SURROUNDING PORT AND TAPERS TOWARDS THE EDGES, MINIMIZING ITS PROFILE AND REDUCING THE STRUCTURE'S VISUAL IMPACT. THE HOVERING MIRROR BOTH TRANSFORMS AND EXPANDS THE SPACE, AND ALLOWS PEDESTRIANS' TO BECOME PART OF THE LANDSCAPE.



IMAGE COURTESY NIGEL YOUNG_FOSTER + PARTNERS



IMAGE COURTESY OF NBBJ

INSPIRATION

PROVIDE **DAYLIGHTING** AND PASSIVE HEATING AND COOLING.

BLUR THE LINES BETWEEN INTERIOR AND EXTERIOR SPACES.

EXPOSE THE **RAWNESS** OF INTERIORS.

APPLICATION

CONSTRUCT COMMERCIAL BUILDINGS AS LARGE GREENHOUSES.

DESIGN INTERIORS WITH TRANSPARENT AND TRANSLUCENT MATERIALS.

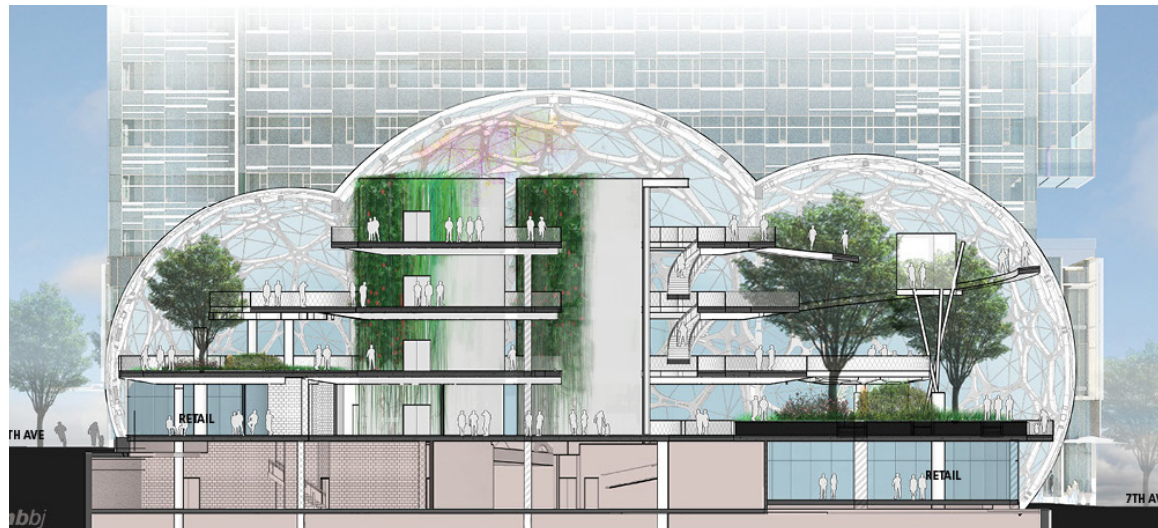
TRANSPARENCY

GREENHOUSE

ARCHITECTS ARE BEGINNING TO DESIGN TRANSPARENT STRUCTURES REMINISCENT OF GREENHOUSES, DUE TO THE POSITIVE QUALITIES THAT PLANT-RICH ENVIRONMENTS BRING TO THE TYPICAL OFFICE SETTING.

THE REVIEW BOARD OF SEATTLE HAS APPROVED NBBJ'S TRI-SPHERE BIODOME PLANNED FOR **AMAZON'S DOWNTOWN SEATTLE HEADQUARTERS.**

REACHING UP TO 95 FEET, THE GLASS CLUSTER OF "SPHERES" ARE DESIGNED TO CREATE AN ALTERNATIVE WORK ENVIRONMENT, CONTAINING A JUNGLE OF MATURE TREES AND TROPICAL PLANTS. THE REVAMPED DESIGN WILL INCLUDE BOTH PRIVATE AND PUBLIC AREAS, ALLOWING ANYONE TO "EXPERIENCE THE SPHERES CLOSE UP." A TOTAL 18,000 SQUARE-FEET OF RETAIL SPACE WILL BE INCLUDED WITHIN THE SPHERES' LUSH INTERIOR, IN ADDITION TO A DOG PARK, WALKWAY AND OPEN FIELD SURROUNDING THE EXTERIOR.



IMAGES COURTESY OF NBBJ

TRANSPARENCY

INTERIOR

ARCHITECTURE HAS BEEN GREATLY INFLUENCED BY THE NOTION OF TRANSPARENCY, WITH NUMEROUS ARCHITECTS PURSUING TRENDS TOWARDS EXPERIMENTATION IN LIGHT AND SPACE.

AN ENTIRELY GLASS AND MIRRORED INTERIOR EXPOSES THE INFRASTRUCTURE OF **SOHO'S NEW OFFICE BUILDING** IN SHANGHAI, DESIGNED BY AIM ARCHITECTURE. THE GLASS CREATES A MULTITUDE OF REFLECTIONS OF THE SALES MODELS AND MEETING ROOMS, WHILE LEAVING THE ORIGINAL HEIGHT AND STRUCTURE VISIBLE, THUS CREATING A 'DOUBLE REALITY' THAT MERGES WITH THE STUNNING VIEWS OF DOWNTOWN SHANGHAI. LIGHT AND SURFACES REFLECT THROUGHOUT THE SPACE, EVEN FURTHER DIFFUSED BY TRANSLUCENT MIRRORS. THE MAIN CONCEPT IS TO SHOW THE CUSTOMERS THE ACTUAL SPACE, AND SIMULTANEOUSLY ADDING A LAYER OF LUXURY.



PHOTO CREDIT © JERRY YIN



TRANSPARENCY



PHOTO CREDIT © PARK, YOUNG-CHAE

INSPIRATION

LOOK TO **NATURE** FOR ANSWERS TO BOTH COMPLEX AND SIMPLE DESIGN PROBLEMS.

ACHIEVE **SIMPLICITY** IN DESIGN.

STRIVE FOR **RESILIENT** STRUCTURES.

EMBRACE **NEW MATERIALS** AND ADVANCED TECHNOLOGIES.

APPLICATION

USE NATURE-INFLUENCED GEOMETRICAL FORM.

DESIGN FACADES WITH A REPETITIVE ARCHITECTURE RHYTHM.

REPETITION

MACRO

BIOMIMETIC ARCHITECTURE GOES BEYOND USING NATURE JUST AS INSPIRATION AND INSTEAD SEEKS TO USE NATURE TO SOLVE THE PROBLEMS OF A BUILDING'S FUNCTION.

HUNDREDS OF CIRCULAR APERTURES PERFORATE THE REINFORCED CONCRETE WALLS OF THE **URBAN HIVE** OFFICE TOWER IN SEOUL BY KOREAN STUDIO ARCHIUM. THE DOTTED FACADE WAS DESIGNED TO RECREATE THE STRUCTURAL STRENGTH OF A HONEYCOMB, THEREFORE ENABLING THE INTERIOR SPACES TO BE LARGELY FREE FROM SUPPORTING STRUCTURES. THE HOMOGENEOUS PATTERN COVERS THE ENTIRETY OF THE 17-STOREY BOX, MAKING IT DIFFICULT TO DISCERN THE POSITION OF THE DIFFERENT FLOORS AND GIVING THE BUILDING A MONOLITHIC PRESENCE. THE ROUND HOLES NOT ONLY CREATE A CONTRAST WITH THE RIGHT ANGLES OF THE SURROUNDING CITYSCAPE, THEY ALSO CREATE A STRUCTURE ABLE TO WITHSTAND THE MOVEMENT GENERATED BY EARTHQUAKES.

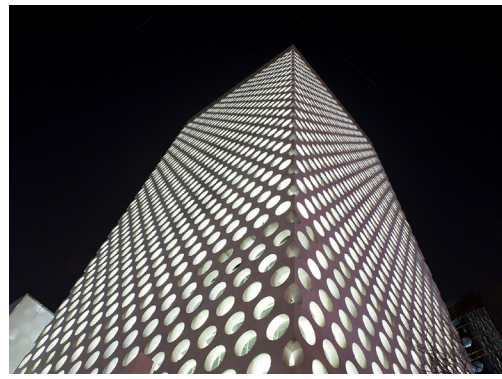


PHOTO CREDIT © PARK, YOUNG-CHAE



REPETITION

MICRO

ARCHITECTURAL RHYTHM, WHICH UTILIZES REPETITION OF CONSTRUCTIVE ELEMENTS OR ORNAMENTS, HELPS TO NOT ONLY DEFINE SPACE, BUT CREATES A UNIQUE CHARACTER TO ANY BUILDING.

THE REFURBISHMENT AT **C_GALERA 43**, DESIGNED BY CREUSECARRASC, IS A RESIDENTIAL BUILDING WITH OFFICES FOR LEASE. THE NARROWNESS OF THE STREET AND THE PROXIMITY OF THE NEIGHBORING STRUCTURES INFLUENCED THE ARCHITECTS TO DESIGN A FACADE THAT RADICALLY TRANSFORMED THE BUILDINGS APPEARANCE.

THE EXTERIOR FACADE ACTS AS A SCREEN IN WHICH SPACES AND BOARDS CREATE A DYNAMIC ARCHITECTURAL RHYTHM. THE NATURAL WOOD INTEGRATED INTO THE FACADE CONTINUES DOWN TO MEET THE GROUND, DEFINING THE INTERMEDIATE SPACE BETWEEN THE ENTRANCE AND THE NARROW, BUSY STREET.



PHOTO CREDIT © HÉCTOR SANTOS-DÍEZ

REPETITION

CANTILEVER

INSPIRATION

PUSH THE BOUNDARIES OF STRUCTURE AND **DEFY GRAVITY.**

ACTIVATE AND SHAPE SIDEWALK EXPERIENCE.

STRIVE TO BE **ICONIC.**

CREATE MORE SQUARE FOOTAGE BY UTILIZING **AIR SPACE.**

APPLICATION

REDUCE THE BUILDING'S FOOTPRINT BY CANTILEVERING PORTION OF THE BUILDING.

USE SUSPENDED GLASS, REINFORCED CONCRETE, AND STEEL IN DESIGNING CANTILEVERED INTERIOR ROOMS.



IMAGES COURTESY OF SCHMIDT HAMMER LASSEN

CANTILEVER

EXTERIOR

CANTILEVERS, WHERE ONE END IS ANCHORED AND THE OPPOSITE JUTS DRAMATICALLY INTO SPACE, REDUCE THE BUILDING'S FOOTPRINT BY 'FLOATING' A SPACE ABOVE EXISTING LANDSCAPE. THIS NOT ONLY DEFINES EXTERIOR PLAZAS, BUT IS ECO-FRIENDLY.

HÖRSAALGEBÄUDE OSNABRÜCK, A UNIVERSITY BUILDING DESIGNED BY BENTHEM CROUWEL ARCHITECTS, IS CONSIDERED THE MAJOR HUB OF THE ENTIRE CAMPUS. THE BUILDING IS A LARGE VOLUME OF THREE FLOORS WITH A CUTAWAY AT THE BOTTOM. THE INCISION ENSURES A STRONG RELATIONSHIP WITH THE OUTSIDE AREA AND GIVES THE UNIVERSITY BUILDING A CLEAR, RECOGNIZABLE ENTRANCE. THIS CAREFULLY DESIGNED OUTSIDE AREA IS USED FOR EVENTS AND CONFERENCES, AND ACTIVATES THE SURROUNDING PEDESTRIAN SIDEWALKS.



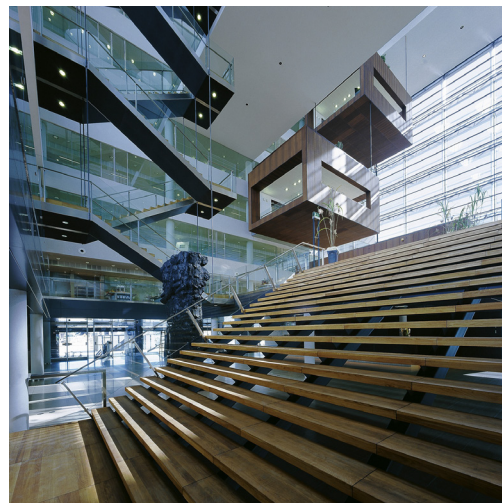
PHOTOS: JENS KIRCHNER, PICTOS: BENTHEM CROUWEL ARCHITECTS.

CANTILEVER

INTERIOR

EMPLOYING A CANTILEVER WITHIN AN INTERIOR ATRIUM NOT ONLY ALLOWS USABLE OFFICE SPACE BELOW, BUT CREATES A DYNAMIC WORK ENVIRONMENT THAT BOOSTS CREATIVITY.

THE **HEADQUARTERS OF NYKREDIT**, DESIGNED BY SCHMIDT HAMMER LASSEN, IS CONCEIVED AS A TRANSPARENT CUBE, PROVIDING CLEAR VISUAL CONNECTIONS WITH COPENHAGEN HARBOR AND FEATURES A DRAMATIC ATRIUM FLOODED WITH NATURAL LIGHT. A STAIRCASE LEADS UP TO THE ATRIUM WHERE SUSPENDED MEETING ROOMS, GLASS ELEVATORS, STAIRCASES, BALCONIES AND WALKWAYS CREATE A LIVELY WORKING ENVIRONMENT. THE MEETING ROOMS HANG 50FT ABOVE THE GROUND, AND ARE PLACED INSIDE HANGING BOXES CLAD IN DARK POLISHED WOOD.



IMAGES COURTESY OF SCHMIDT HAMMER LASSEN ARCHITECTS



THANK YOU

ALL PHOTOS AND CONTENT USED WITH PERMISSION

DESIGNERS FEATURED:

- SCHMIDT HAMMER LASSEN ARCHITECTS
- FOSTER + PARTNERS
- PK ARKITEKTAR
- NBBJ
- AIM ARCHITECTURE
- ARCHIUM
- CREUSECARRASC
- BENTHEM CROUWEL ARCHITECTS

CREDITS