



IMAGE COURTESY OF ASSEMBLAGESTUDIO

# 2014 DESIGN TRENDS

## LANDSCAPE ARCHITECTURE

GRACE LENNON ASSOCIATE AIA LEED AP BD&C



VERTICAL

PG 3

SEAMLESS

PG 9

NATIVE

PG 6

## INSPIRATION

**BRING LIFE** INTO THE CITY THAT IS TYPICALLY RESERVED FOR PARKS AND GARDENS.

PROMOTION OF **BIODIVERSITY**.

BALANCING **THE MICRO-CLIMATE** IN AN URBAN ENVIRONMENT.

TO STRIVE FOR **SUSTAINABLE** DESIGN.

## APPLICATION

INCORPORATE VERTICAL GARDENS BUILT ON SOLID METAL, PVC AND NON-BIODEGRADABLE FELT FRAMES.

MITIGATE THE BUILD UP OF TOXIC GASES IN THE ENVIRONMENT AND HELP PURIFY THE AIR IN THE URBAN ATMOSPHERE.



IMAGE COURTESY OF BOERI STUDIO



## MICRO

LANDSCAPE ARCHITECTS ARE BEGINNING TO USE VERTICAL GARDENS TO REINTRODUCE NATURE INTO MAN-MADE ENVIRONMENTS.

THE DEEP-FRAMED WINDOWS OF **THE REGIONAL CHAMBER OF COMMERCE AND INDUSTRY** BY FRENCH STUDIO CHARTIER-CORBASSON ARCHITECTES BURST THROUGH MOSSY UNDULATING WALLS BESIDE A 100-YEAR OLD MANSION. FOR THE DESIGN OF THESE GREEN WALLS, THE ARCHITECTS DREW INSPIRATION FROM THE JAPANESE-STYLE GARDENS THAT SURROUND THE PROPERTY. THIS PLINTH OF LIVING GREENERY CREATES A LINK BETWEEN THE NEW WING, THE EXISTING PREMISES AND THE GARDENS AND ALSO ALLOWS FOR THIS URBAN CORRIDOR TO BE VEGETATED AND LUSH.



IMAGES COURTESY OF CHARTIER-CORBASSON ARCHITECTES



# VERTICAL

## MACRO

WITH VERTICAL GARDENS, URBAN LANDSCAPE ARCHITECTS CAN PROVIDE RESIDENTS WITH A PRIVATE LANDSCAPE WITHIN THEIR APARTMENTS WHILE OFFERING THE SAME ADVANTAGES OF LIVING IN A CITY.

**BOSCO VERTICALE**, BY BOERI STUDIO, IS A HIGH-DENSITY TOWER BLOCK THAT EXPERIMENTS WITH THE INTEGRATION OF A LUSH LANDSCAPE WITHIN THE FACADE OF THE ARCHITECTURE. THIS VERTICAL VEGETATION REGENERATES THE LOST FORESTS ON THE GROUND WITHIN THE INHABITABLE SPACE OF BUILDINGS. THE TOWERS HAVE THE CAPACITY TO HOLD 480 BIG AND MEDIUM SIZED TREES, 250 SMALL SIZE TREES, 11,000 GROUND-COVER PLANTS AND 5,000 SHRUBS. LIVING ON THE FACADE AS THEY DO IN THE WILD, THE PLANTS AND TREES FILTER OUT DUST FROM THE AIR, ABSORB CARBON DIOXIDE AND RELEASE OXYGENATED AIR INTO THE ATMOSPHERE AND LIVING QUARTERS.



IMAGES COURTESY OF BOERI STUDIO



IMAGE COURTESY OF ASSEMBLAGESTUDIO

## INSPIRATION

PROVIDE AESTHETICALLY PLEASING, AND  
**SITE-RESPONSIVE** DESIGN.

CONNECT TO A REGION'S **LOCAL TERRAIN**.

STRIVE TO BE **EFFICIENT, GREENER, AND ECO-NOMICAL**.

**LIMIT IMPACT** ON OUR ENVIRONMENT.

## APPLICATION

DESIGN LOW-MAINTENANCE AND DROUGHT-TOLERANT  
GARDENS AND PLANTS.

PROVIDE REGIONAL NATIVE PLANTS IN LANDSCAPE  
DESIGN.

# NATIVE



# DESERT

IN RECENT YEARS, MANY REGIONS HAVE SUFFERED THROUGH DROUGHTS, THUS FORCING SOME LANDSCAPE ARCHITECTS TO DESIGN TO LIMIT NONESSENTIAL WATER USE.

THE ARCHITECTURAL FIRM ASSEMBLAGESTUDIO HAS RECENTLY COMPLETED THE **TRESARCA** HOUSE, DESIGNED TO THRIVE IN THE DRY DESERT OUTSIDE OF VEGAS. THE DESIGN OF THE HOME CREATES AN EXTENSION OF THE LANDSCAPE THROUGH THE STACKING AND PLACEMENT OF DROUGHT TOLERANT PLANTS, MIMICKING THE ECOLOGY OF THE NEARBY RED ROCK MOUNTAINS. IT'S COLORS, MATERIALS, AND THE ARCHITECTURE SEEK TO CREATE A DWELLING SUITED FOR THE TRYING ENVIRONMENT.



IMAGES COURTESY OF ASSEMBLAGESTUDIO



# NATIVE



# FOREST

FROM URBAN DEVELOPMENTS TO RURAL PROPERTIES, DESIGNERS ARE USING MORE SUSTAINABLE DESIGN AND MANAGEMENT TECHNIQUES, WHICH INCLUDE THE EXPANDED USE OF REGIONAL NATIVE PLANTS.

**WHEELER CABIN**, LOCATED IN WASHINGTON AND DESIGNED BY JOHNSTON ARCHITECTS, IS INTENDED TO BLEND WITH THE SURROUNDING ENVIRONMENT WHILE UTILIZING REGIONAL VEGETATION OF THE FOREST. THE ARCHITECTS, ALONG WITH TALL TREE CONSTRUCTION, ALSO MADE USE OF BLOWN-DOWN TREES FROM STORMS TO PROVIDE THE LOGS THAT WERE MILLED INTO THE SIDING, FASCIAS AND TRIM OF THE HOUSE. THE LANDSCAPE ARCHITECTS' USE OF NATIVE VEGETATION IS NOT ONLY A CONSERVATION MEASURE, BUT IS BETTER SUITED FOR THE DIFFICULT AND UNIQUE SITE.



IMAGES COURTESY OF NOSES ARCHITECTS

# NATIVE



# SEAMLESS

## INSPIRATION

PROVIDE **HEALTHIER** LIVING ENVIRONMENTS

A DESIRE TO CONNECT WITH THE **OUTDOORS**.

STRIVE FOR **SPACE** MAXIMIZATION.

**BLUR** THE LINES BETWEEN INTERIOR AND EXTERIOR SPACES.

## APPLICATION

PROVIDE WELL-DESIGNED COURTYARDS THAT DIRECTLY CONNECT TO INTERIOR LIVING SPACE.

BLEND OUTSIDE AND INSIDE WITH USE OF SLIDING DOORS AND INTERIOR COURTYARDS.



IMAGES COURTESY © ADRIAN LLAGUNO

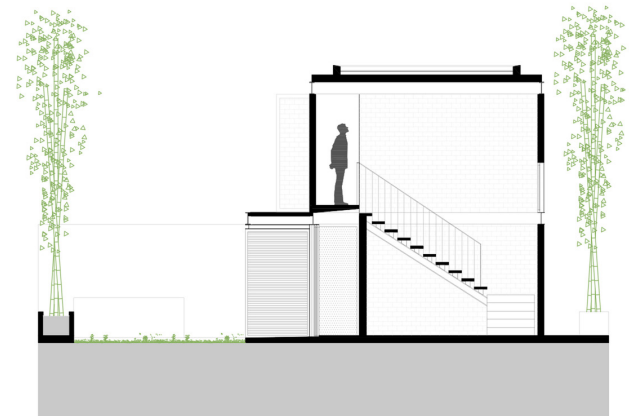


# SEAMLESS

## RESIDENTIAL

DESIGNERS ARE USING LANDSCAPE DESIGN TO PROVIDE A FUSION BETWEEN INSIDE AND OUTSIDE, RESPONDING TO THE CHALLENGE OF KEEPING PRIVACY WITHOUT LOSING THE VIEWS OF THE OUTSIDE.

THE **BRISAS HOUSE**, DESIGNED BY GARZA CAMISAY ARQUITECTOS, IS LOCATED WITHIN A SMALL PLOT, WITH A CENTRAL COURTYARD SURROUNDED BY THIRTY YEAR OLD BAMBOO. THE HOUSE'S OPEN WINDOWS OFFER VIEWS TOWARDS THIS VEGETATED PERIMETER, FORMING A CONTINUOUS GREEN BARRIER. THE L-SHAPED SCHEME, THAT INTEGRATES THE GARDEN WITH THE INTERIOR SPACE, MAXIMIZES THE SPACE OF THE SMALL SITE.



IMAGES COURTESY © ADRIAN LLAGUNO



# SEAMLESS

## RETAIL

MANY LANDSCAPE ARCHITECTS WORK IN COLLABORATION WITH RETAIL ARCHITECTS TO CREATE OUTDOOR, VEGETATED USABLE SPACE.

DESIGNED FOR THE 2013 MELBOURNE FOOD AND WINE FESTIVAL, **THE URBAN COFFEE FARM AND BREW BAR** BY HASSELL ATTEMPTS TO PLAY ON THIS ELEMENT OF INTRIGUE AND SURPRISE, CREATING AN UNEXPECTED LANDSCAPE IN A FAMILIAR URBAN SETTING. THE ARCHITECTS' DESIGN BRINGS A JUNGLE OF COFFEE TREES TO THE EDGE OF A CENTRAL BUSINESS DISTRICT. APPROXIMATELY 120 COFFEE TREES TRANSFORM THE SPACE INTO A TERRACED COFFEE FARM AND ABSTRACT, MODULATED JUNGLE. ALONGSIDE THE TREES, A COLLECTION OF SHIPPING CONTAINERS, TIMBER PALLETS AND PACKING CRATES PROVIDE "WALLS" AND SEATING FOR THE COFFEE SHOP.



IMAGES COURTESY © BONNIE SAVAGE



THANK YOU

ALL PHOTOS AND CONTENT USED WITH PERMISSION

DESIGNERS FEATURED:

- **ASSEMBLAGESTUDIO**
- **CHARTIER-CORBASSON ARCHITECTES**
- **BOERI STUDIO**
- **JOHNSTON ARCHITECTS**
- **GARZA CAMISAY ARQUITECTOS**
- **HASELL**

# CREDITS