

BRING YOUR STYLE HOME WINTER 2016

# domino

Welcome  
to the club.

**WOMEN OF  
THE WING**  
WILD WINTER  
FLORALS  
EPIC PARTY  
IDEAS

plus

STATEMENT PIECES FOR EVERY ROOM



# WELCOME TO THE JUNGLE

A leafy oasis in Amsterdam, Bar Botanique's rich green, pink, and apricot hues are worthy of a Dutch master.

PHOTOGRAPHY BY MEGHAN MCNEER  
TEXT BY SARAH COFFEY



A verdant corner, where the plant life pairs with the decor.



## SCOUTING



Vintage furnishings, jewel tones with hints of bright pink and yellow, and lots of sculptural greenery give Bar Botanique its eclectic vibe.



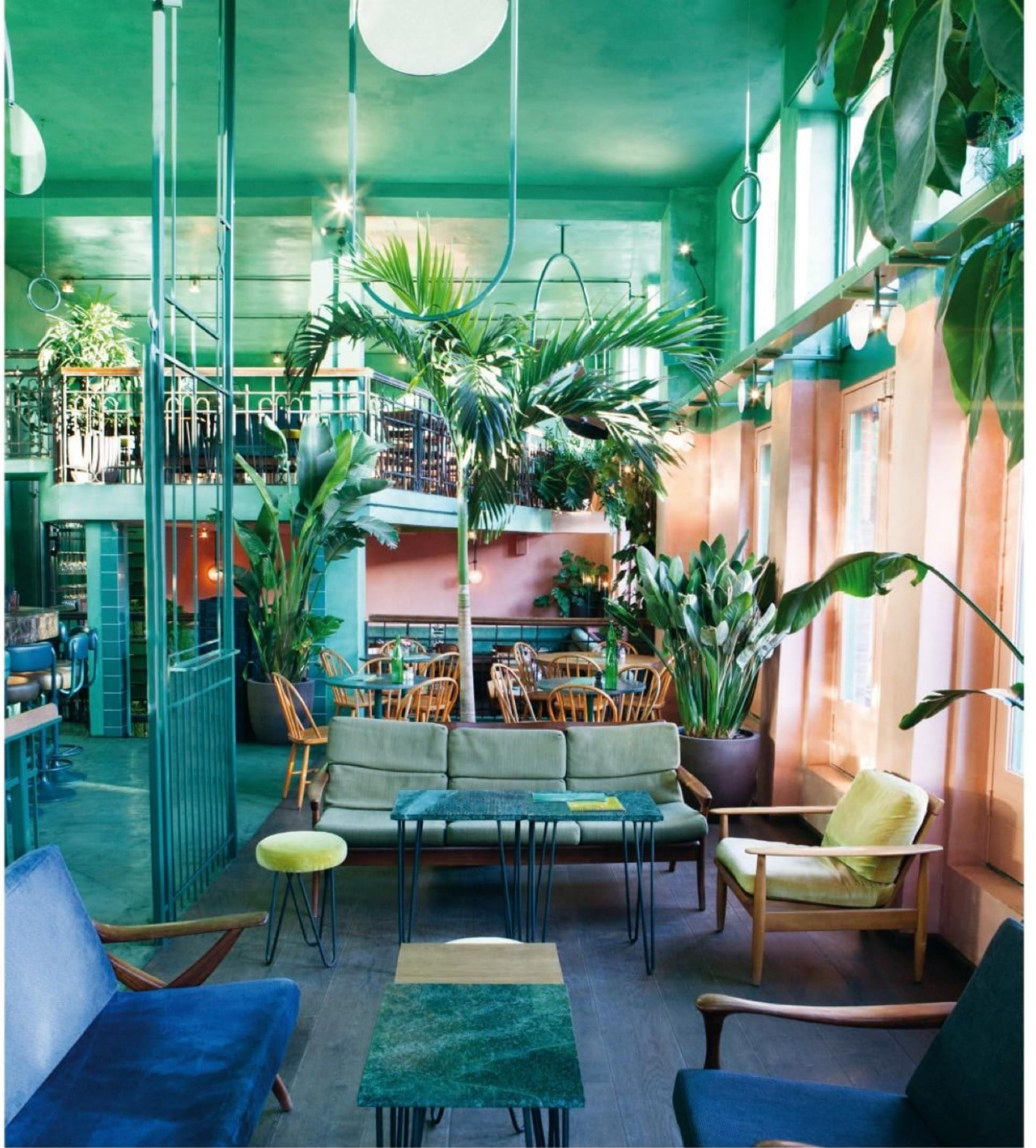
**STEPPING INSIDE AMSTERDAM'S** Bar Botanique and the adjoining Café Tropicque is like entering a lush landscape of palms, philodendrons, ferns, and monstera. The airy space, a former gymnasium, fills with sunlight streaming in from tall windows. A bright yellow espresso machine that greets visitors from the bar alongside a stack of bubblegum pink coffee cups serves as an instant pick-me-up.

Dutch firm Studio Modijefsky designed the complete look, from the velvet booths to the custom font on the menus. "We wanted a sense of playfulness," says founder and designer Esther Stam. For the palette, she paired a spectrum of greens in emerald and citrine with pops of navy blue, pink, and apricot that feels retro-chic yet timeless. "There are no rules for working with color," Stam explains. "It's a matter of materials. Balance comes with the oak wood, concrete, copper, and marble."

To reflect the abundance of natural light and vibrant hues, Stam suspended sculptural mirror mobiles throughout the space. She made the custom tables that line the lounge and the café's *souterrain* dining room with pink, green, and gray marble, while much of the vintage furniture in teak and leather came from Marktplaats (Amsterdam's answer to Craigslist). The final touch: handmade cement tiles by Swedish design company Claesson Koivisto Rune adorning the grass green bar. The geometric dandelion pattern perfectly blends in with the surrounding flora.







*Get the Look*



**TWILIGHT BLUE**  
by Benjamin Moore  
[benjaminmoore.com](http://benjaminmoore.com)



**SPARKLING EMERALD**  
by Behr [behr.com](http://behr.com)



**ALOE**  
by HGTV  
Sherwin Williams  
[sherwin-williams.com](http://sherwin-williams.com)



**BABY'S BLANKET**  
by Dunn Edwards  
[dunnedwards.com](http://dunnedwards.com)



**SWEET MELON**  
by Glidden  
[glidden.com](http://glidden.com)



**CUT CITRINE**  
by Ralph Lauren  
[ralphlaurenpaint.com](http://ralphlaurenpaint.com)