



Cabinet, Door & Trim Coatings

DECOPRIME® & DECOGLO®

INTERIOR



Durability meets excellence



DECOPRIME

is a premium, ultra-low VOC, water-based, wood primer for interior wood, hardboard, and wallboard. It is ideal for use on new wood cabinets, doors & trim.

Why DECOPRIME outperforms the competition

- :: Fast drying
- :: Exceptional sandability, adhesion & enamel holdout



Sandability

A primer that is easily sandable provides a smooth and uniform surface, allowing for maximum adhesion of a topcoat. DECOPRIME does an excellent job at sanding without gumming as compared to the competition.



DECOPRIME

Image 1: DECOPRIME doesn't gum up the sandpaper while sanding.



DECOPRIME

Image 2: DECOPRIME has better sandability compared to the competition and is easier to generate powder when it is sanded.



Regional Brand

Image 3: Other primers gum up the sandpaper while sanding.



PRODUCTS BEARING THIS LOGO ARE EG-FREE™ AND TAC/HAP-FREE

Ethylene glycol (EG), a solvent often used in water-based paints, is listed as a Toxic Air Contaminant (TAC) and Hazardous Air Pollutant (HAP). In 1983, we were the first in the industry to voluntarily replace EG with propylene glycol, a nontoxic alternative "generally regarded as safe" by the FDA. Also, every Dunn-Edwards product with the EG-FREE logo is formulated without any other TAC or HAP.



VOC AND RAVOC RATINGS ON EVERY LABEL

Dunn-Edwards was the first paint company to label its products with RAVOC ratings (reactivity-adjusted VOC content), a better way to measure potential air quality impacts of coatings. To learn more about RAVOC ratings, visit dunnedwards.com/RAVOC



LEED® GOLD-CERTIFIED PAINT MANUFACTURING FACILITY

In 2011, Dunn-Edwards opened the world's first LEED Gold-certified paint manufacturing facility in Phoenix, AZ. Encompassing manufacturing, product development, quality control and more, the 336,000-sq.-ft. facility was designed to be the greenest in the industry.

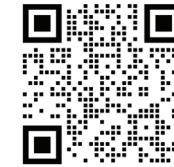
"LEED" and related logo is a trademark owned by the U.S. Green Building Council and is used with permission.

DECOGLO

is an ultra-premium, interior, ultra-low VOC, urethane modified acrylic cabinet, door & trim paint. It provides a lacquer like finish ideal for use on properly prepared interior wood substrates, including furniture, and is available in an Eggshell and Semi-Gloss finish.

Why DECOGLO outperforms the competition

- :: Exceptional film hardness
- :: Scuff and chemical resistance
- :: Fast drying and block resistance
- :: Excellent flow and leveling



See the Difference

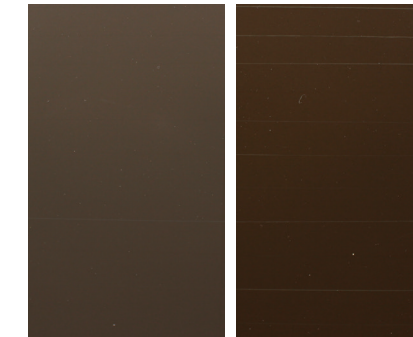
	EGGSHELL	SEMI-GLOSS
Cabinets	•	•
Doors	•	•
Furniture	•	•
Trim and Crown Molding	•	•

These are commonly used gloss levels for surfaces listed above. Gloss may be affected by texture, porosity of the surface and atmospheric conditions. Please contact a Dunn-Edwards representative or your local store for specific product availability.



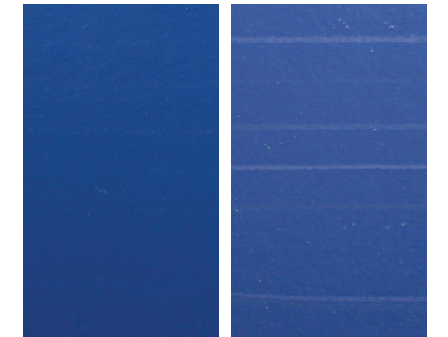
Scuff Resistance

DECOGLO outperforms competitor products in scuff resistance which can be defined as the physical damage that typically occurs on the surface of the top coats.



DECOGLO Eggshell

National Brand

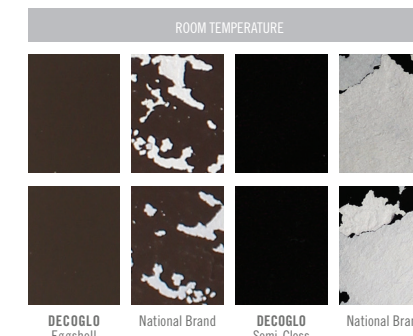


DECOGLO Semi-Gloss

National Brand

Block Resistance

When two painted surfaces come into contact, such as a door and door jamb, they can stick together or block and paint can peel from the surface. DECOGLO clearly beats the National Brands, as their paints are sticking together and peeling from the surface.

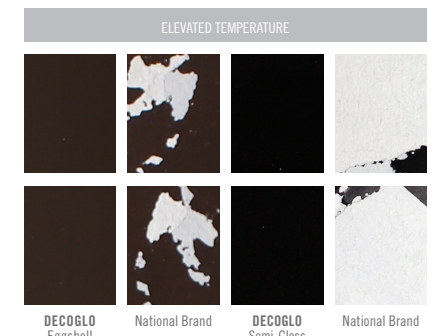


DECOGLO Eggshell

National Brand

DECOGLO Semi-Gloss

National Brand



DECOGLO Eggshell

National Brand

DECOGLO Semi-Gloss

National Brand

Block Resistance Test Method: After the coating has cured, the panel is tested by cutting out two 1.5" squares and placing the panels face to face, so that the coated surfaces of each square are together. The squares are then placed on a glass plate and a rubber stopper and 1,000 gram weight placed on top to provide a standardized amount of force to the surface. The applied force of the coated surfaces is allowed to sit for the following length of time for each condition before trying to pull the 2 panels apart: (1) Room Temperature – 24 Hours; (2) Elevated Temperature – 30 minutes. The weight is removed and the panels allowed to equilibrate for 5 minutes, before separating the panels.

Scuff Resistance Test Method: On a 2'X2' or similar unpainted drywall divided into two sections, 2 coats of the test paint and competitor are applied using a roller with 3/8" nap. The paint is then allowed to dry for 7 days at ambient conditions. Next, using a different material run a mar resistance test by holding the objects at an angle against the painted surface and running it down or across the painted surface with a constant pressure and speed. After test is completed, assess the panel for the degree of mar/scratch visibility of each material tested. Lastly, using a sponge soaked with Fantastik solution clean the marked middle section of the panel with the intent to show the ease of removing the different scuff marks. DECOGLO and National competitor test samples were scuffed with Oak, Nylon, Aluminum, Glass, Brass and using fingernails which are some commonly used materials to test scuff resistance at the laboratory.

All test examples are high resolution photographs of the actual test results. The tests were conducted by Dunn-Edwards Laboratories and can be viewed at the Corporate Office by appointment.



A GREEN LEGACY, A GREENER FUTURE.

Dunn-Edwards has a green legacy that makes us proud and inspires us to do more. We are firmly dedicated to the principle of eco-efficiency, which we define as the ability to satisfy human needs in ways that minimize adverse impacts on energy and material resources, environmental quality, and human health and safety. DECOPRIME & DECOGLO are yet another example of this commitment.



PHOTOGRAPHS: Paint colors depicted in the photographs in this brochure appear differently than on actual surfaces. Photographic processes and lighting will alter color.

COVER PHOTO: Cabinet doors above - DEHW08 Classic White
Cabinet doors below - DE6291 Casting Shadow

BACK PHOTO: Walls with Venetian plaster - DE6064 Windmill
Door & Trim - DEA107 Hot Jazz



(888) DE PAINT (337-2468) | dunnedwards.com
©2023 Dunn-Edwards Corporation. All rights reserved. ESL1069 - 4M 06/23

