

ULTRA-PREMIUM INTERIOR PAINTS

SUPREMA[®]

Superior Performance With Effortless Application



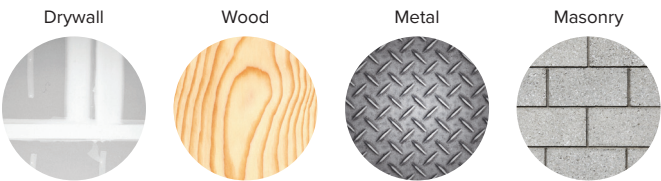
SUPREMA

SUPREMA paints are a complete line of ultra-premium, ultra-low VOC, acrylic latex coatings. They combine exceptional hide with superior durability, washability and block resistance.

Why SUPREMA paints outperform the competition

- :: Applies easily and dries to a smooth, uniform finish
- :: Formulated with the highest-quality resins that create a harder finish and better block resistance
- :: Excellent flow and leveling due to a special thickening agent that interacts better with the resin

For use on these substrates



	Flat	Velvet	Eggshell	Satin/ Low Sheen	Semi-Gloss
Family & Living Rooms	•	•	•		
Dining Rooms	•	•	•	•	
Bedrooms	•	•	•		
Ceilings	•	•	•		
Hallways	•	•	•	•	
Offices	•	•	•		
Kids' Rooms		•	•	•	
Kitchens & Baths				•	
Cabinets, Doors, Windows & Shutters				•	
Molding & Trim					•

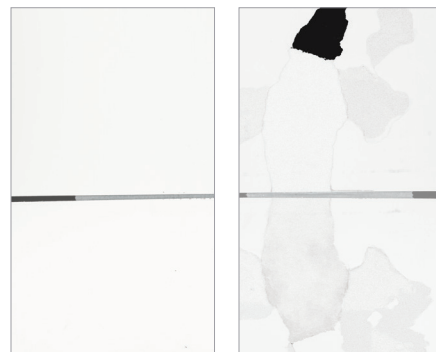
These are commonly used gloss levels for surfaces listed above. Gloss may be affected by texture, porosity of the surface and atmospheric conditions. Please contact a Dunn-Edwards representative or your local store for specific product availability.





Superior block resistance

Count on SUPREMA paints to resist sticking and peeling, due to tough resin particles that create a hard finish.



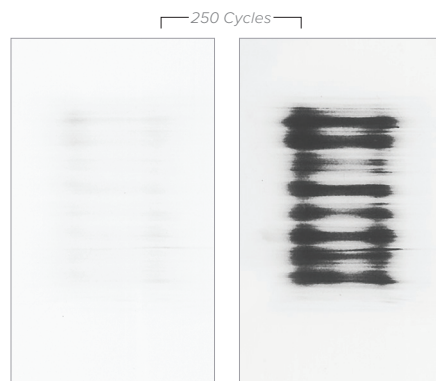
SUPREMA Semi-Gloss

National Brand

Block resistance is a paint's ability to prevent sticking or peeling when two painted surfaces come into contact, such as a door and doorjamb.

Excellent scrub resistance

Clean with confidence, knowing SUPREMA paints will keep your surfaces looking flawless for years to come.



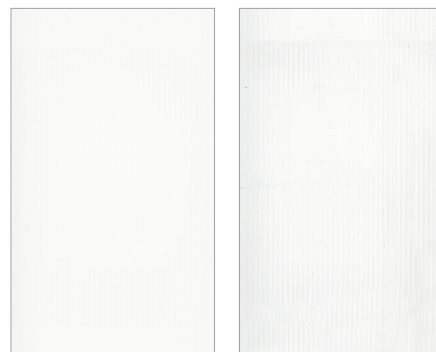
SUPREMA Flat

National Brand

Scrub resistance measures how well the paint film can endure abrasion from cleaning tools and solutions without wearing away.

Great flow and leveling

SUPREMA paints dry to a smooth, uniform finish without unsightly marks or lines.



SUPREMA Satin/Low Sheen

Regional Brand

Flow and leveling refers to how smoothly and evenly a paint is able to level itself out and lay down a uniform coating, eliminating brush or roller marks.

All test examples are high resolution photographs of the actual test results. The tests were conducted by Dunn-Edwards Laboratories and can be viewed at the corporate office by appointment.

PROTECT WHAT MATTERS

The success of your projects depends on the performance and durability of the products you use. Safeguard your work with coatings engineered to last. You'll be doing your part to protect the planet, too. Made in the world's first and only LEED® Gold-certified paint manufacturing facility, Dunn-Edwards products meet or exceed most environmental standards.



'LEED' and related logo is a trademark owned by the U.S. Green Building Council and is used with permission.



Products bearing this logo are EG-FREE™ and TAC/HAP-FREE. Ethylene glycol (EG), a solvent often used in water-based paints, is listed as a Toxic Air Contaminant (TAC) and Hazardous Air Pollutant (HAP). In 1983, Dunn-Edwards was the first in the industry to voluntarily replace EG with propylene glycol, a nontoxic alternative "generally regarded as safe" by the FDA. Also, every Dunn-Edwards product with the EG-FREE logo is formulated without any other TAC or HAP.

A GREEN LEGACY, A GREENER FUTURE.

Dunn-Edwards has a green legacy that makes us proud and inspires us to do more. We are firmly dedicated to the principle of eco-efficiency, which we define as the ability to satisfy human needs in ways that minimize adverse impacts on energy and material resources, environmental quality, and human health and safety.

HEALTH & SAFETY when using water-based paints:

CAUTION! INHALATION OF SPRAY MIST OR SANDING DUST MAY BE HARMFUL. Use only with adequate ventilation. Avoid breathing vapors, spray mist and sanding dust. Wear a NIOSH-approved N100 filter mask (particulate type) when spraying or sanding. Avoid contact with skin and eyes. Do not ingest. Close container after use.

FIRST AID: If swallowed, immediately give 1 or 2 glasses of water to drink—for emergency information, call 1-800-222-1222. If having difficulty breathing, move to fresh air. For eye contact, immediately flush with water for 15 minutes. For skin contact, wash thoroughly with soap and water.

KEEP OUT OF REACH OF CHILDREN. For more information, see the appropriate Product Data Sheet(s) and Safety Data Sheet(s) available at dunnedwards.com

CAUTION! Scraping or sanding surfaces of older buildings (especially pre-1978) may release dust containing lead or asbestos. EXPOSURE TO LEAD OR ASBESTOS CAN BE VERY HAZARDOUS TO YOUR HEALTH. Wear a NIOSH-approved N100 particulate filter mask to avoid breathing dust. Use a HEPA vacuum for cleanup, and finish by water-washing all surfaces. For more information, see Dunn-Edwards 'Surface Preparation Safety' guide or call U.S. EPA's lead hotline at 1-800-424-LEAD, or visit epa.gov/lead or epa.gov/asbestos—or contact your state or local Health Agency.

PHOTOGRAPHS: Paint colors depicted in the photographs in this brochure appear differently than on actual surfaces. Photographic processes and lighting will alter appearance. BACK COVER PHOTO: Walls: Sonora Shade (DE5263) • Ceiling: French White (DEW311) • Trim: Downing to Earth (DET634) FRONT COVER PHOTO: Wall: Rainsong (DET541) • Trim + Ceiling: White Picket Fence (DET648)



(888) DE PAINT (337-2468) | dunnedwards.com

©2024 Dunn-Edwards Corporation. All rights reserved. ESL1067 - 3.2M 08/24



LEARN MORE