

ULTRA-PREMIUM INTERIOR/EXTERIOR PAINTS

# ARISTOSHIELD®

Oil-like Performance in a Water-Based Paint



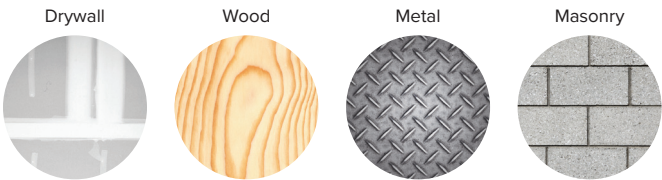
# ARISTOSHIELD

ARISTOSHIELD paints are a line of ultra-premium, ultra-low VOC, interior/exterior coatings formulated with advanced water-based urethane alkyd technology for an oil-like finish. They are ideal for use on high-end projects where superior performance and durability are required.

### Why ARISTOSHIELD paints outperform the competition

- :: Superior balance of hardness and flexibility
- :: Can be used as a direct-to-metal (DTM) coating on properly prepared surfaces
- :: Excellent flow and leveling, which forms a durable, uniform finish
- :: Superior non-yellowing properties compared to other alkyd emulsion paints

### For use on these substrates



	Eggshell	Satin/Low Sheen	Semi-Gloss	High Gloss
Trim & Fascia	•	•	•	
Kitchens & Baths	•	•	•	•
Cabinets, Doors, Windows & Shutters	•	•	•	•
Gates & Fences	•	•	•	•
Garage Doors & Gutters		•	•	•

*These are commonly used gloss levels for surfaces listed above. Gloss may be affected by texture, porosity of the surface and atmospheric conditions. Please contact a Dunn-Edwards representative or your local store for specific product availability.*

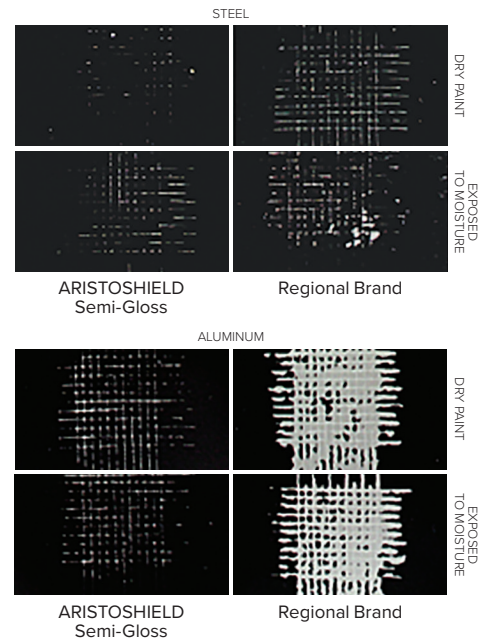






## Best-in-class metal adhesion

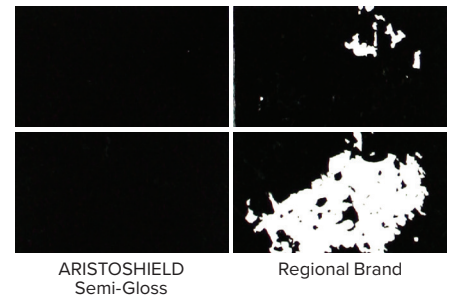
ARISTOSHIELD paints do a better job at sticking to both steel and aluminum, especially when exposed to moisture.



*Adhesion refers to the ability to bond firmly to the substrate. Proper adhesion is crucial for long-lasting paint performance.*

## Excellent block resistance

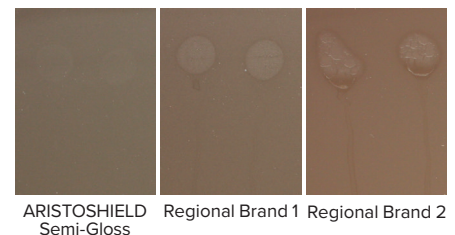
ARISTOSHIELD paints clearly outperform the rest, with no sticking or peeling.



*Block resistance is the ability of a dried paint film to resist sticking to another painted surface when pressed together, such as doors and doorjamb.*

## Outstanding surfactant leaching resistance

ARISTOSHIELD paints effectively fight surfactant leaching, while other competitors' products have unsightly glossy, soapy, sticky residues.



*Surfactant leaching occurs when water-soluble components (surfactants) migrate to the surface when exposed to moisture or high humidity, causing streaking and discoloration.*

All test examples are high resolution photographs of the actual test results. The tests were conducted by Dunn-Edwards Laboratories and can be viewed at the corporate office by appointment.

# PROTECT WHAT MATTERS

The success of your projects depends on the performance and durability of the products you use. Safeguard your work with coatings engineered to last. You'll be doing your part to protect the planet, too. Made in the world's first and only LEED® Gold-certified paint manufacturing facility, Dunn-Edwards products meet or exceed most environmental standards.



'LEED' and related logo is a trademark owned by the U.S. Green Building Council and is used with permission.



Products bearing this logo are EG-FREE™ and TAC/HAP-FREE. Ethylene glycol (EG), a solvent often used in water-based paints, is listed as a Toxic Air Contaminant (TAC) and Hazardous Air Pollutant (HAP). In 1983, Dunn-Edwards was the first in the industry to voluntarily replace EG with propylene glycol, a nontoxic alternative "generally regarded as safe" by the FDA. Also, every Dunn-Edwards product with the EG-FREE logo is formulated without any other TAC or HAP.

## A GREEN LEGACY, A GREENER FUTURE.

Dunn-Edwards has a green legacy that makes us proud and inspires us to do more. We are firmly dedicated to the principle of eco-efficiency, which we define as the ability to satisfy human needs in ways that minimize adverse impacts on energy and material resources, environmental quality, and human health and safety.

**HEALTH & SAFETY** when using water-based paints:

**CAUTION!** INHALATION OF SPRAY MIST OR SANDING DUST MAY BE HARMFUL. Use only with adequate ventilation. Avoid breathing vapors, spray mist and sanding dust. Wear a NIOSH-approved N100 filter mask (particulate type) when spraying or sanding. Avoid contact with skin and eyes. Do not ingest. Close container after use.

**FIRST AID:** If swallowed, immediately give 1 or 2 glasses of water to drink—for emergency information, call 1-800-222-1222. If having difficulty breathing, move to fresh air. For eye contact, immediately flush with water for 15 minutes. For skin contact, wash thoroughly with soap and water.

**KEEP OUT OF REACH OF CHILDREN.** For more information, see the appropriate Product Data Sheet(s) and Safety Data Sheet(s) available at [dunnedwards.com](http://dunnedwards.com)

**CAUTION!** Scraping or sanding surfaces of older buildings (especially pre-1978) may release dust containing lead or asbestos. EXPOSURE TO LEAD OR ASBESTOS CAN BE VERY HAZARDOUS TO YOUR HEALTH. Wear a NIOSH-approved N100 particulate filter mask to avoid breathing dust. Use a HEPA vacuum for cleanup, and finish by water-washing all surfaces. For more information, see Dunn-Edwards 'Surface Preparation Safety' guide or call U.S. EPA's lead hotline at 1-800-424-LEAD, or visit [epa.gov/lead](http://epa.gov/lead) or [epa.gov/asbestos](http://epa.gov/asbestos)—or contact your state or local Health Agency.

PHOTOGRAPHS: Paint colors depicted in the photographs in this brochure appear differently than on actual surfaces. Photographic processes and lighting will alter appearance. BACK COVER PHOTO: Cabinets: After the Storm (DE5769) and Classic White (DEHW08) FRONT COVER PHOTO: Ironwork: Antique Bronze (DEB002)



(888) DE PAINT (337-2468) | [dunnedwards.com](http://dunnedwards.com)

©2024 Dunn-Edwards Corporation. All rights reserved. ESL1030 - 75M 10/24



LEARN MORE